



Quarry Amphitheatre

Venue Guide

Updated December 2023
All information contained within is subject to change

For all terms and conditions of hire read the Quarry Amphitheatre Hire Agreement



CONTENTS

History of the Limestone Quarry	3
Contact Information	4
Getting To The Venue.....	4
Useful Telephone Numbers	5
Main Auditorium	6
Seating	6
Stage Specifications	6
Loading Dock.....	6
Bio Box.....	7
Marquee	7
The Cavern Undercroft.....	8
Dressing Rooms	8
Rehearsal Space	9
Front of House.....	9
Box Office.....	9
Café.....	9
Toilets	9
Parking	9
Stage Power and Cabling	10
In House Lighting.....	10
In House Audio	11
Sound Restrictions.....	11
Catering.....	12
Appendix 1 - Stage Truss	13
Appendix 2 - Stage Truss - Carriage Detail.....	14
Appendix 3 - Stage Truss - Weight Load	15
Appendix 4 - Auditorium Seating Plan	16
Appendix 5 - Auditorium Plan	17
Appendix 6 - Emergency Evacuation Diagram	18

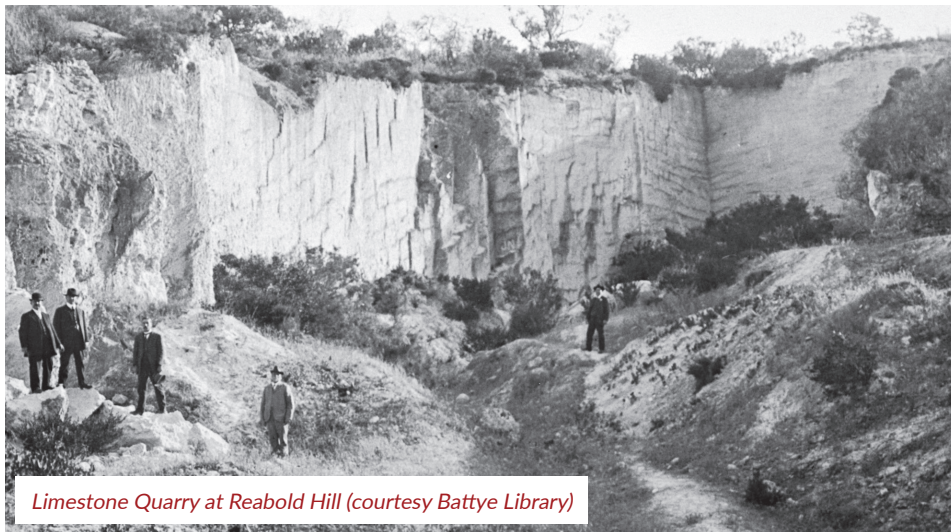
HISTORY OF THE LIMESTONE QUARRY

The Quarry Amphitheatre is proudly owned and managed by The Town of Cambridge.

Set in natural bushland surrounds just 10 minutes from the Perth CBD, the Amphitheatre extends a relaxed, informal atmosphere. It has an intrinsic ability to attract high-quality performing arts from a variety of sources, from bands through to ballet.

The Quarry Amphitheatre supports a capacity audience of 557 people and is a licensed BYO facility making it the perfect setting for summer evening picnics before live shows to be enjoyed by friends, families and couples.

The Quarry Amphitheatre began its life as a working limestone quarry in 1834 when Henry Trigg was granted 500 acres of land. Trigg, a master builder, recognized the value of the limestone outcropping along the western edge of his grant and started up a quarrying and lime-burning business. At the height of the limestone kilns operations, more than 50 men worked at the site.



Limestone Quarry at Reabold Hill (courtesy Battye Library)

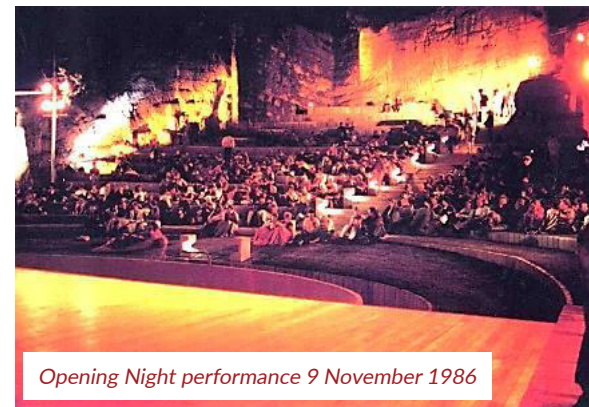
Many of Perth's early public buildings, including the foundations for the Perth Town Hall (which opened in 1870) were constructed using lime and stone from the quarry and kilns. Private quarrying ceased in 1906 and after 1906, the quarry remained disused for many decades, except as a regular site of adventure for local children.

In the early 1980s, Diana and Ken Waldron conceived the idea of converting the old quarry into an amphitheatre for stage productions.

Construction began following receipt of a \$468,000 grant from a Commonwealth Employment programme which stipulated the use of unemployed labour.

The Quarry Amphitheatre was officially opened by Senator Peter Cook on 9 November 1986.

Now proudly owned and managed by the Town of Cambridge, the Quarry Amphitheatre is one of Perth's most unique performance venues.



Opening Night performance 9 November 1986

CONTACT INFORMATION

VENUE ADMINISTRATION

Telephone: +61 (08) 9383 8903

Email: admin@quarryamphitheatre.com.au

Website: www.quarryamphitheatre.com.au

Venue: 1 Waldron Drive, City Beach, Western Australia 6015

Post: PO Box 15, Floreat Western Australia 6014

VENUE WEBSITE

www.quarryamphitheatre.com.au

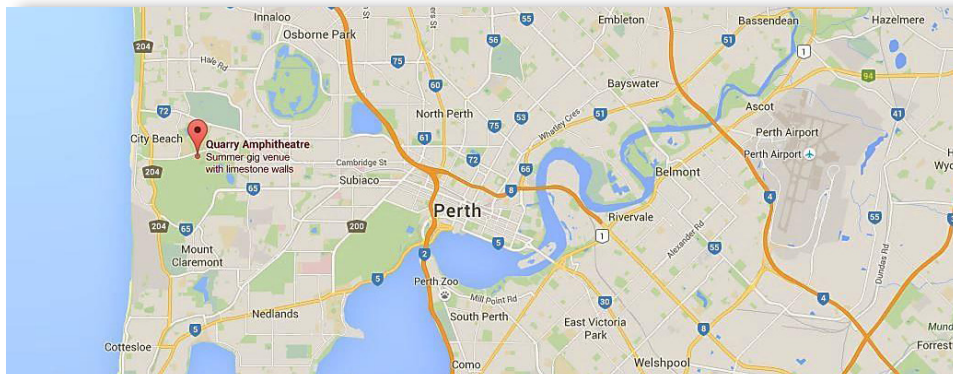
Your event will be posted on the Quarry Amphitheatre website, Instagram and Facebook page at no charge. Email your information (hi res image/ blurb) to admin@quarryamphitheatre.com.au

The website will also provide a link to your allocated ticketing agent allowing the public to purchase tickets online.

The Quarry Amphitheatre is also on Instagram and Facebook. Look for the 'Q'

LOCATION

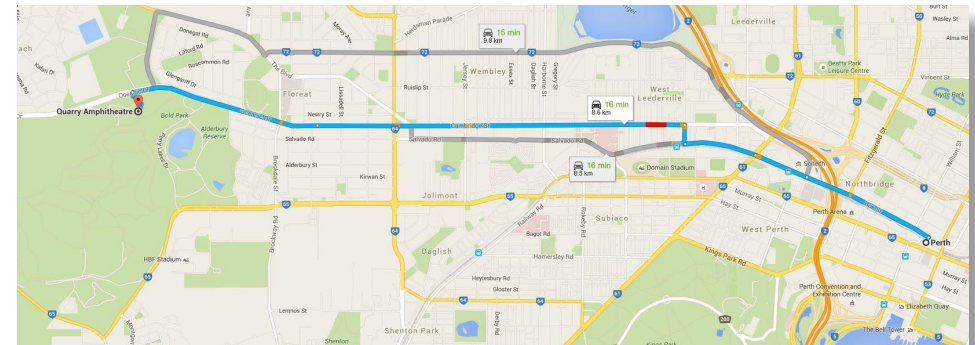
The Quarry Amphitheatre is conveniently located approximately 10 minutes from Perth CBD.



GETTING TO THE VENUE

BY CAR

- From Perth CBD, take Roe Street out of the CBD.
- Continue along Railway Parade.
- Turn Right at Southport Street.
- Turn Left onto Cambridge Street.
- Continue onto Oceanic Drive.
- Turn Left into Waldron Drive - Quarry Amphitheatre main entrance.

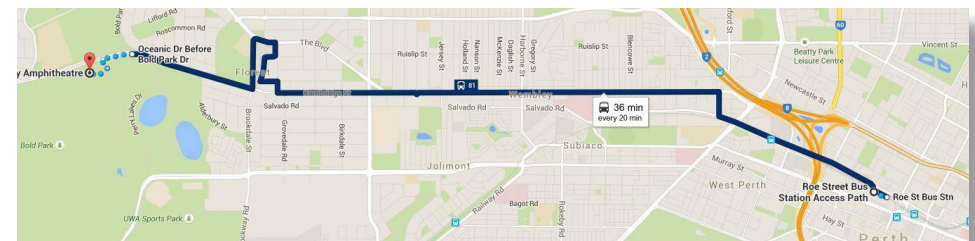


BY PUBLIC TRANSPORT

Transperth Bus No. 81 - Stop No. 12749

Call 136 213 to check Transperth bus times.

www.transperth.wa.gov.au/timetable



USEFUL TELEPHONE NUMBERS

EMERGENCY

Ambulance/Police/Fire	000
Police Assistance	131 444
Wembley Police Station	(08) 9214-7100
Poisons Information Line	131 126

TOWN OF CAMBRIDGE

Administration	(08) 9347-6000
Ranger Services (24 hours)	(08) 9347-6000

ULTIMO CATERING + EVENTS

Administration	(08) 9444-5807
----------------	----------------

TRANSPORT

Swan Taxi	131 330
Black & White Cabs	133 222
Transperth	136 213
Swan Taxi Trucks	(08) 9321 7821
Budget Car Hire	1300 362 848
Thrifty Car Hire	1300 367 227

RIGGING (STAGE TRUSS)

Statewide Staging Systems	(08) 9317 8611
---------------------------	----------------



MAIN AUDITORIUM (Specification and Technical Information)

AUDITORIUM SEATING

- Reserved Seating
- Seating capacity - 557 pax
- Auditorium comprises terraced lawn seating
- Row O is permanent fixed seating
- There are 18 rows (AAA to Q) with centre aisle (AAA to N)
- Two wheelchair seats at the rear of auditorium with companion seat available



STAGE SPECIFICATIONS

- 19 metres wide - 13.5 metres deep
- 2.5 metres wing space on either side
- Flat jarrah timber floor
- Below stage cable trays around entire perimeter of stage
- Rake - None
- Dance tarkett (available upon application)

STAGE ACCESS

- Stage Right - stage level.
- Stage Left - stairs USL accessed from cavern level

STAGE LIGHTING TRUSS

- Articulated lighting truss and ground support system
- Industry standard lighting truss system
- Running from front to back on stage left and stage right
- SL to SR Truss (available upon application)



LOADING DOCK

- Truck access is via driveway off main entrance
- Trucks are able to drive or reverse up to the side of stage
- The loading bay is on OP side of stage
- Vehicles are not permitted on stage



MAIN AUDITORIUM (Specification and Technical Information)



BIO BOX

- Located at the top of the auditorium (SR side).
- Location of the Allen & Heath QU-16 Digital Mixer
- Location of the HedgeHog 4 lighting console.
- Rigging point for FOH lighting from front of Bio Box.



MARQUEE

- A 9m x 10m concert marquee is available for hire (available on application) - pictured
- 21m x 10m corporate marquee is available for hire (available on application)



CAVERN UNDERCROFT

DRESSING ROOMS

The Cavern Undercroft is located under the main stage and contains the dressing rooms, artist/crew facilities, a rehearsal space and male/female toilets.

The general public are not permitted in this area without permission of the venue.

DRESSING ROOM 1

- Capacity 5 people
- Reverse cycle air conditioning
- Five mirrors with lights
- Hand basin
- Fridge (small)
- Toilet and shower facilities



DRESSING ROOM 2

- Capacity 15+ people
- Reverse cycle air conditioning
- 14 mirrors with lights
- Hand basin
- Fridge (large)
- Toilet and shower facilities
- Wall mounted hot water boiler unit
- Iron and ironing board
- Costume rails (from ceiling)



TOILETS

Separate male and female toilet facilities are also located at the end of the corridor.

CAVERN UNDERCROFT

REHEARSAL SPACE

- Located in the Cavern the rehearsal floor is included in the venue hire
- The rehearsal floor can also be used as an area for cast and crew
- The rehearsal space is approximately 12m x 9m
- Capacity 100 people
- Dance tarkett flooring
- Ballet barres on three walls
- Black theatre drapes
- Sound system
- 3-phase power outlet - 32A
- Lighting bars
- Evaporative cooling
- Fluorescent lighting



MEZZANINE AREA

Not available to hirers or public.

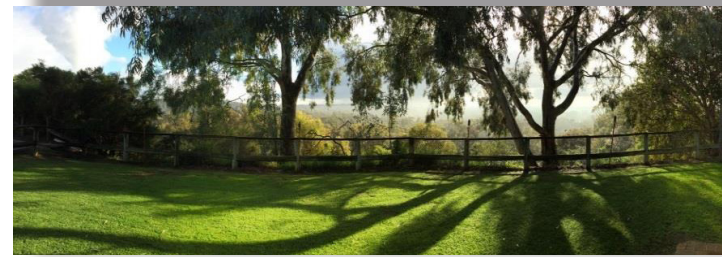
FRONT OF HOUSE

BOX OFFICE

- All ticketing for public events is independent to the Quarry Amphitheatre. Hirers/Promoters can nominate their own ticketing agent.
- The venue box office can only be open to the public on event nights and must be managed by the promoter/hirer.

LIMESTONE CAFÉ LAWN FUNCTION AREA

Located in front of the Limestone Café, the lawn area is used by café patrons. It can be sectioned off to entertain sponsors and VIP guests.



PUBLIC TOILET FACILITIES

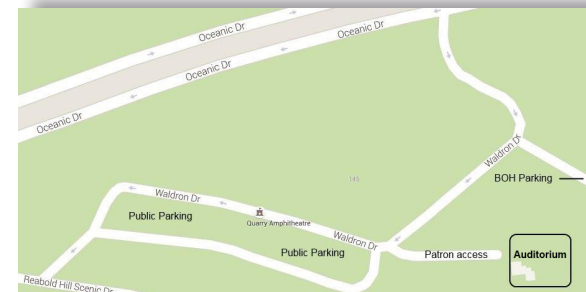
- Male and female toilet facilities are located at the top of the auditorium.
- A unisex accessible toilet is available on the café side of the building.

PUBLIC PARKING

- Free venue parking - 205 parking bays (overflow on Oceanic Drive)
- Seven ACROD parking bays

BACK OF HOUSE ARTIST AND STAFF PARKING

Available for artists, production crew, staff and authorised vehicles



STAGE POWER AND CABLING

LIGHTING TOWERS

Specifications available on pages 13, 14 and 15

- Lighting Truss system - SL & SR (front to back)

CABLING FROM BIO BOX TO STAGE

- 8 way audio (AES compatible)
- 8 way DMX
- 4 way Cat 6



PORTABLE POWER

- 2 x 6 outlet - 15amp distribution box
- 2 x 15 metre 3 phase power extension cord

STAGE POWER

- Stage Power - 200amps direct to stage (Pic 1)
 - 4 x 32 amp 3 phase.
 - SOCAPEX 4 x 50 amp
- 1 x 3 phase outlet 32A - base of USL & USR towers
- 1 x 3 phase outlet in alcove - 32A (located SR)
- 1 x 3 phase outlet in cavern - 32A
- 4 x 10amp 240v weather proof GPO's - SL & SR towers (Pic 2)



IN-HOUSE LIGHTING

All theatre lighting comes free of charge with auditorium hire

LIGHTING CONTROL - BIO BOX

- Hedgehog 4 lighting console
- 2 x Philips Strand Lighting 12 Channel Dimmer Racks 10A (available for stage level)
- 2 x Bytecraft - Bytesize Bigtop Dimmer Racks



LX FIXTURES*

- 40 x LED Par Cans - RGBWA (Pic 1)
- 20 x Par 64's
- 8 x Phillips SL Punchlite 220 - RGBW (Pic 2)
- 4 x moving head LX (Pic 3)
- 2 x Follow spots



ARCHITECTURAL WALL LIGHTS* (charges apply)

- Controlled from Showtec LED Commander in Bio Box
- 10 x wall mounted lights

HOUSE LIGHTS

- Controlled from Showtec LED Commander in Bio Box



IN-HOUSE AUDIO

Charges apply

SOUND CONTROL - BIO BOX

- Allen & Heath QU-16
- Allen & Heath AB168
16 channel Audio rack



EQUIPMENT - BIO BOX

- 1 x Denon DNC 615 CD Player - rack mounted.
- 1 x Denon DN-T620 CD, Cassette Player/Recorder - rack mounted.
- Production Intercom - MS200. 4 Comms sets available.



ACCESSORIES

- Behringer Ultra DI Pro 4 Channel Active DI Box - DI4000
- Behringer Ultra DI Box - DI1000
- 6 x Microphone Stands

FOH SPEAKERS

Main System - QSC K Series

- 4 x K12 - 75° 1000 W active 12" 2-way loudspeaker system (flown)
- 2 x K12 - 75° 1000 W active 12" 2-way loudspeaker system (portable)
- 6 x KSub - Dual 12" (300 mm) 1000 W active 4th-order bandpass subwoofer
- 2 x RCF 312A speakers (portable)

MICROPHONES

- 2 x Shure SM 58 - wireless
- 2 x Shure SM58 - corded
- 4 x Condenser Mics

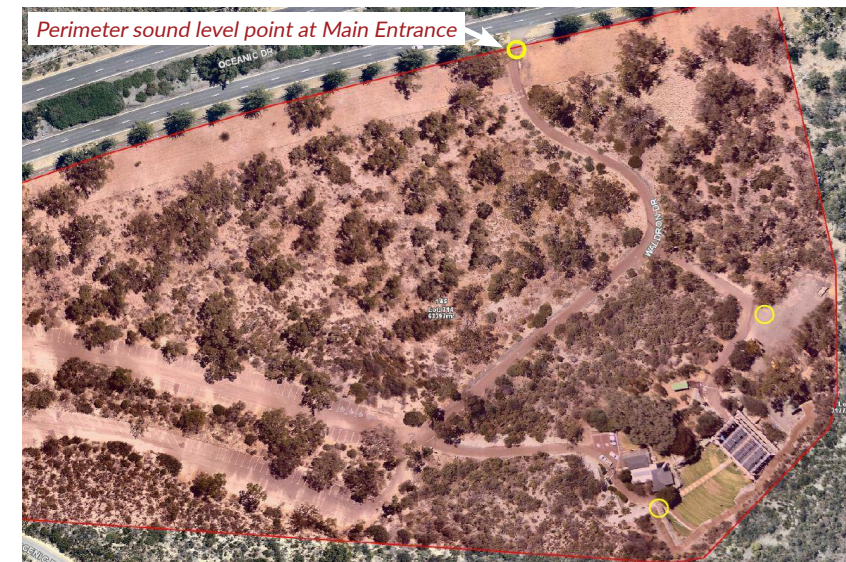


SOUND RESTRICTIONS

The Quarry Amphitheatre is located in a residential area.

15.4. Noise Pollution - Quarry Amphitheatre Hire Application Contract

- 15.4.1 The Hirer shall comply with the Environmental Protection (Noise) Regulations 1997 (Noise Regulations) and sound levels measured at the perimeter of the venue, as recommended by the Department of Occupational Safety and Health of Western Australia (DOSHWA).
- Monday to Friday inclusive 8am to 11pm - 50 decibels
 - Saturday, Sunday and Public Holidays inclusive of 8am to 11pm - 45 decibels
 - Monday to Sunday inclusive 11pm to 8am - 40 decibels
- 15.4.2 The Hirer shall be responsible for the payment of all fines and associated costs incurred as a result of non-compliance with either the Noise Regulations or relevant occupational safety and health requirements.
- 15.4.3 The Hirer shall ensure that any amplification of live performers or broadcasting of pre-recorded sounds using sound reinforcement systems shall cease between the hours of 10.00pm and 8.00am.
- 15.4.4 The Hirer agrees to immediately comply with the Town appointed Duty Manager in any request to stop or reduce noise pollution.



CATERING

- The Limestone Café/Bar facility is managed by Ultimo Catering + Events.
- The Limestone Café/Bar is open on all performance night.
- Other nights are by arrangement with venue and catering management.
- Patrons can BYO Food and Beverages (including alcohol) to ticketed events.
- Production 'riders' must be organised through Ultimo Catering + Events.

www.ultimocateringandevents.com.au

4. Catering and Liquor - Quarry Amphitheatre Hire Application Contract

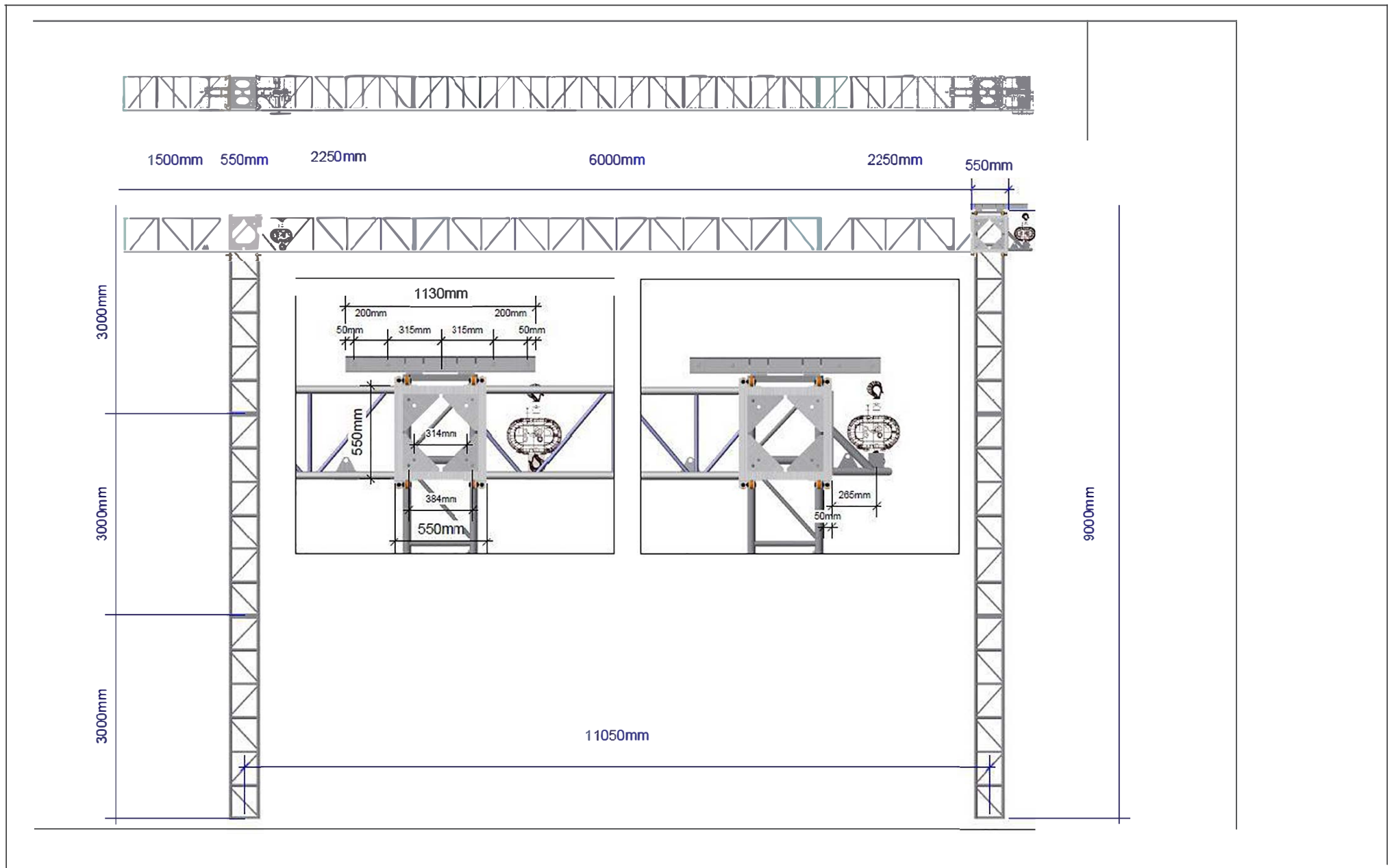
- 4.1. The Hirer and associated parties are not permitted to BYO food and beverages, including alcohol, into the Quarry Amphitheatre and must procure all food and beverages from the Quarry Caterer.
- 4.2. The Hirer must make all catering arrangements for an Event direct with the Quarry Caterer. All catering deposits and charges will be in accordance with the Quarry Caterer's standard fees and charges (as approved by the Town) and will be payable by the Hirer direct to the Quarry Caterer.
- 4.3. The supply of beverages or food from sponsors is only permitted at the discretion of the Town and the Quarry Caterer.
- 4.4. Confirmation of catering arrangements, including relevant charges, will be carried out in accordance with the Quarry Caterer's contract with the Town.
- 4.5. The Town is not liable for any default by either party in the provision of catering services in connection with this Agreement.



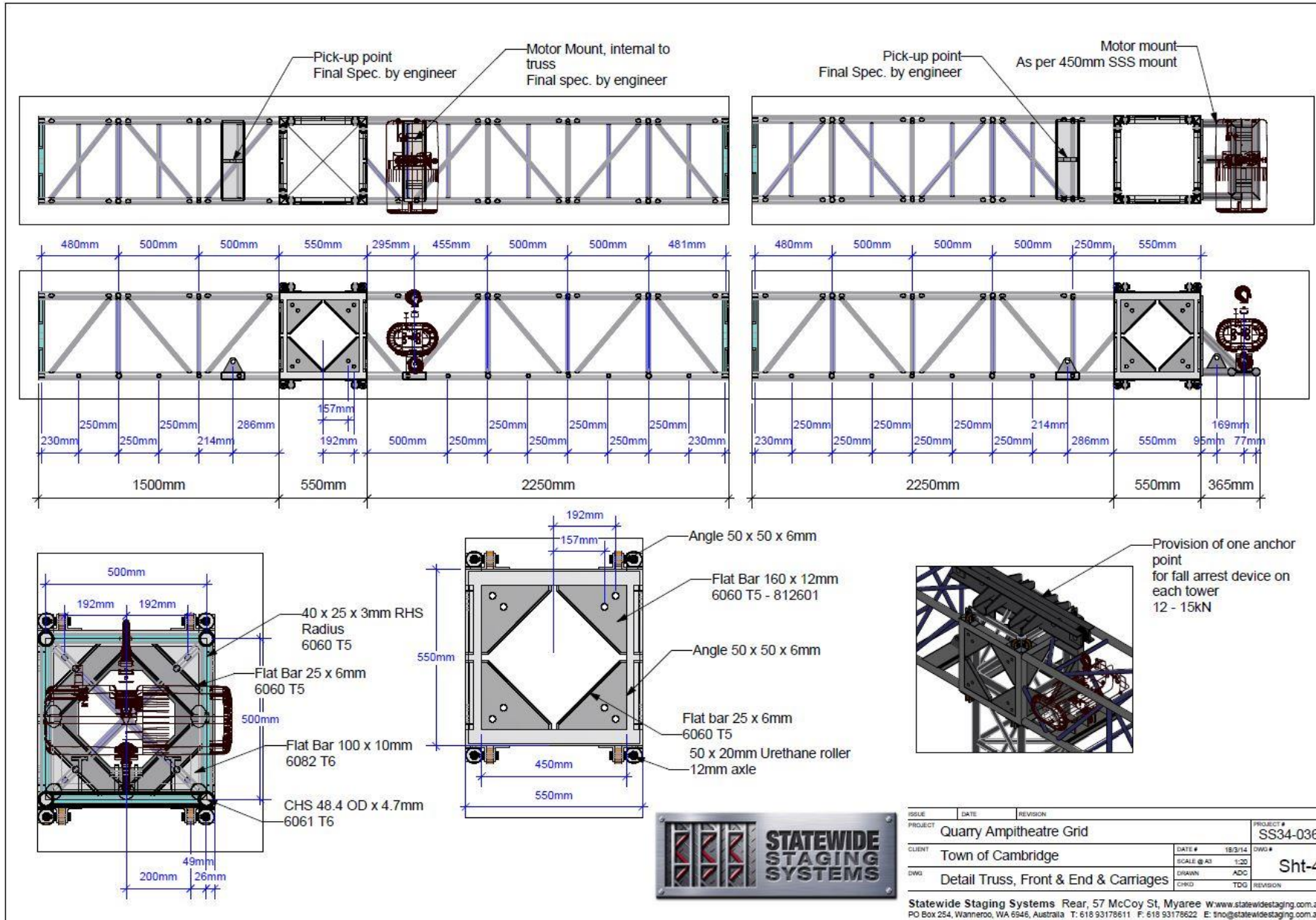
ULTIMO | CATERING + EVENTS



Appendix 1 - STAGE TRUSS



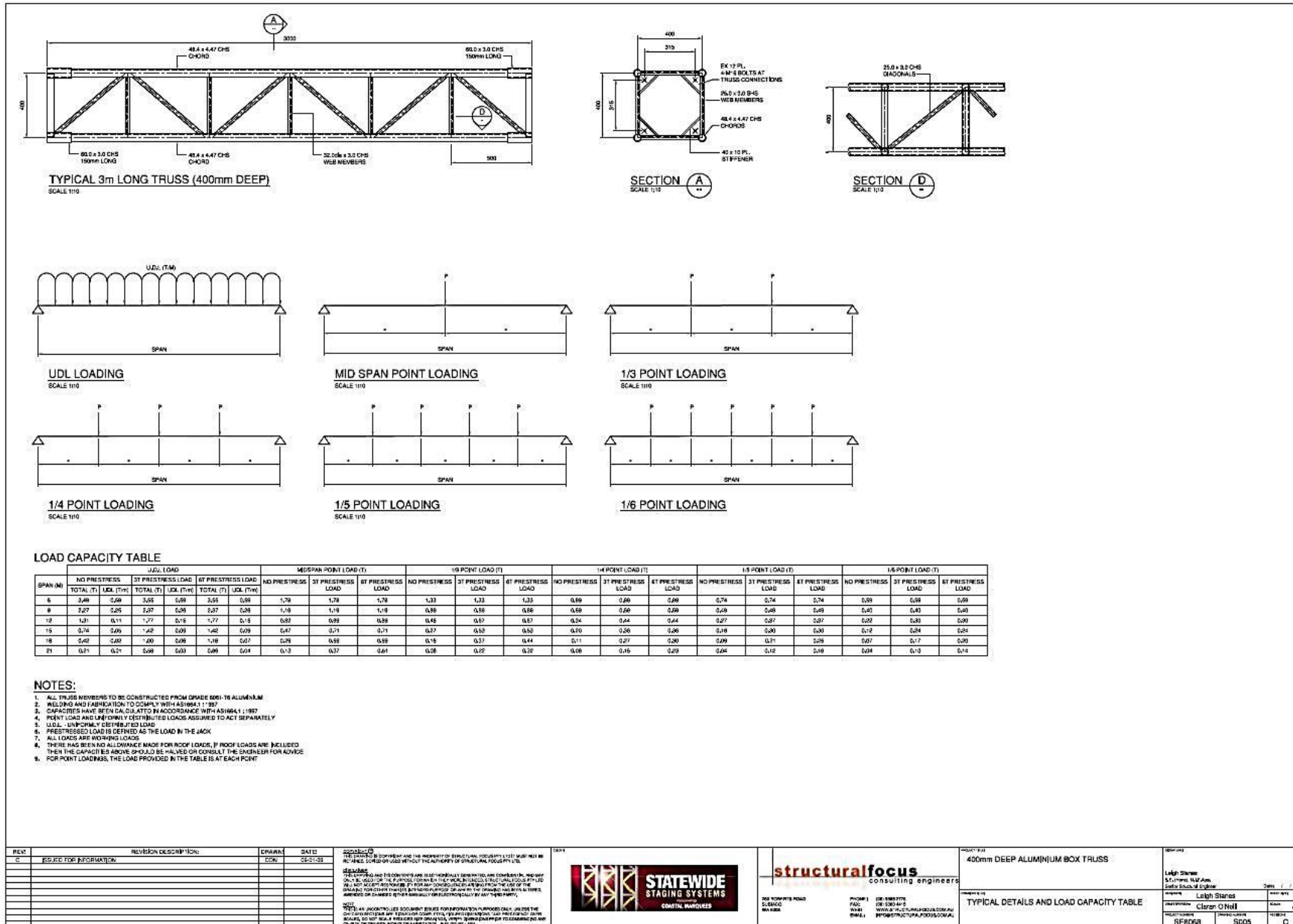
Appendix 2 - STAGE TRUSS - CARRIAGE DETAIL



ISSUE	DATE	REVISION	PROJECT #
PROJECT	Quarry Amphitheatre Grid		SS34-036
CLIENT	Town of Cambridge	DATE #	18/3/14
DWG	Detail Truss, Front & End & Carriages	SCALE @ A3	1:20
		DRAWN	ADC
		CHKD	TDC
		REVISION	

Statewide Staging Systems Rear, 57 McCoy St, Myaree W: www.statewidestaging.com.au
 PO Box 254, Wanneroo, WA 6946, Australia T: 618 93178611 F: 618 93178622 E: sno@statewidestaging.com.au

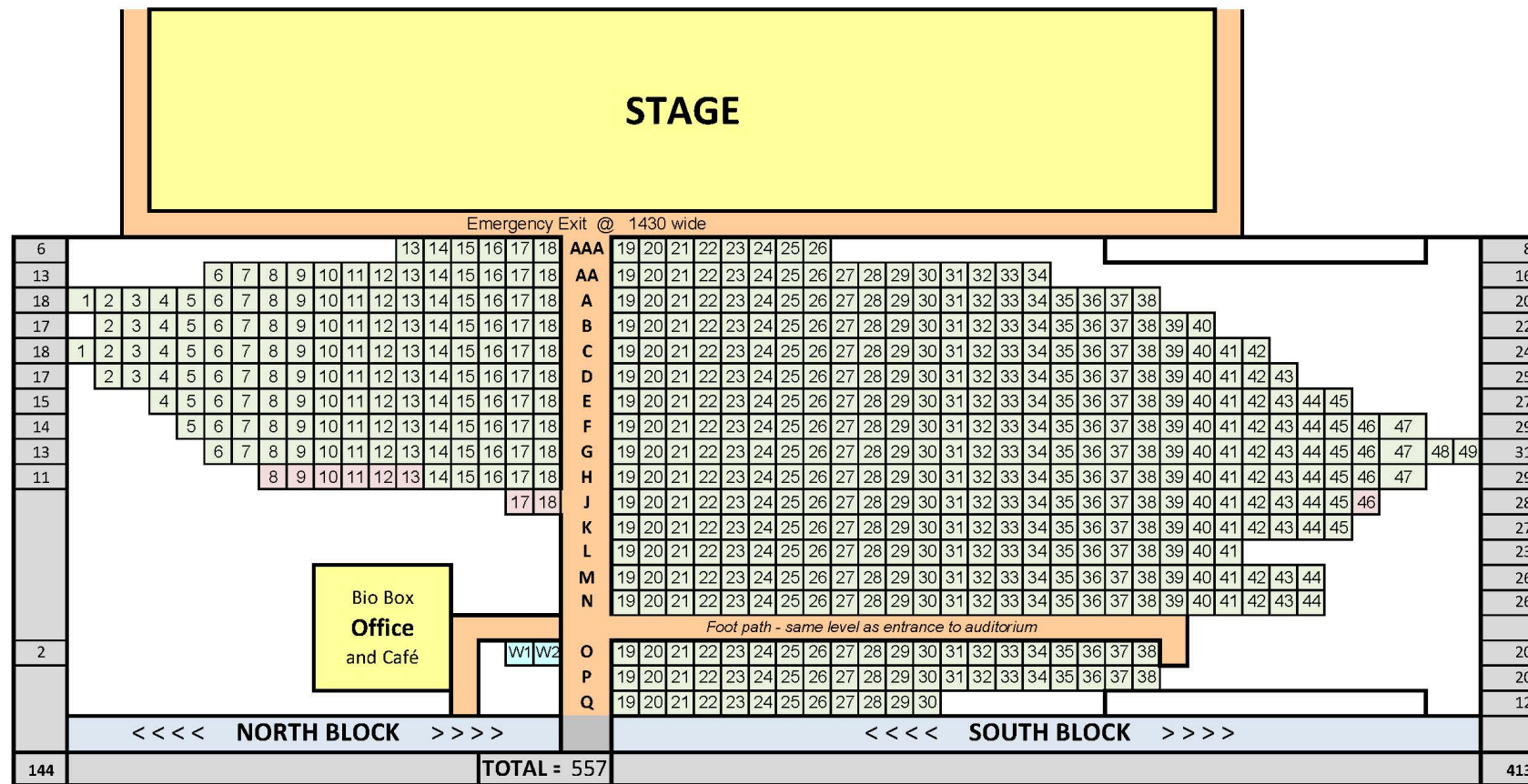
Appendix 3 - STAGE TRUSS - WEIGHT LOAD



Appendix 4 - AUDITORIUM SEATING PLAN



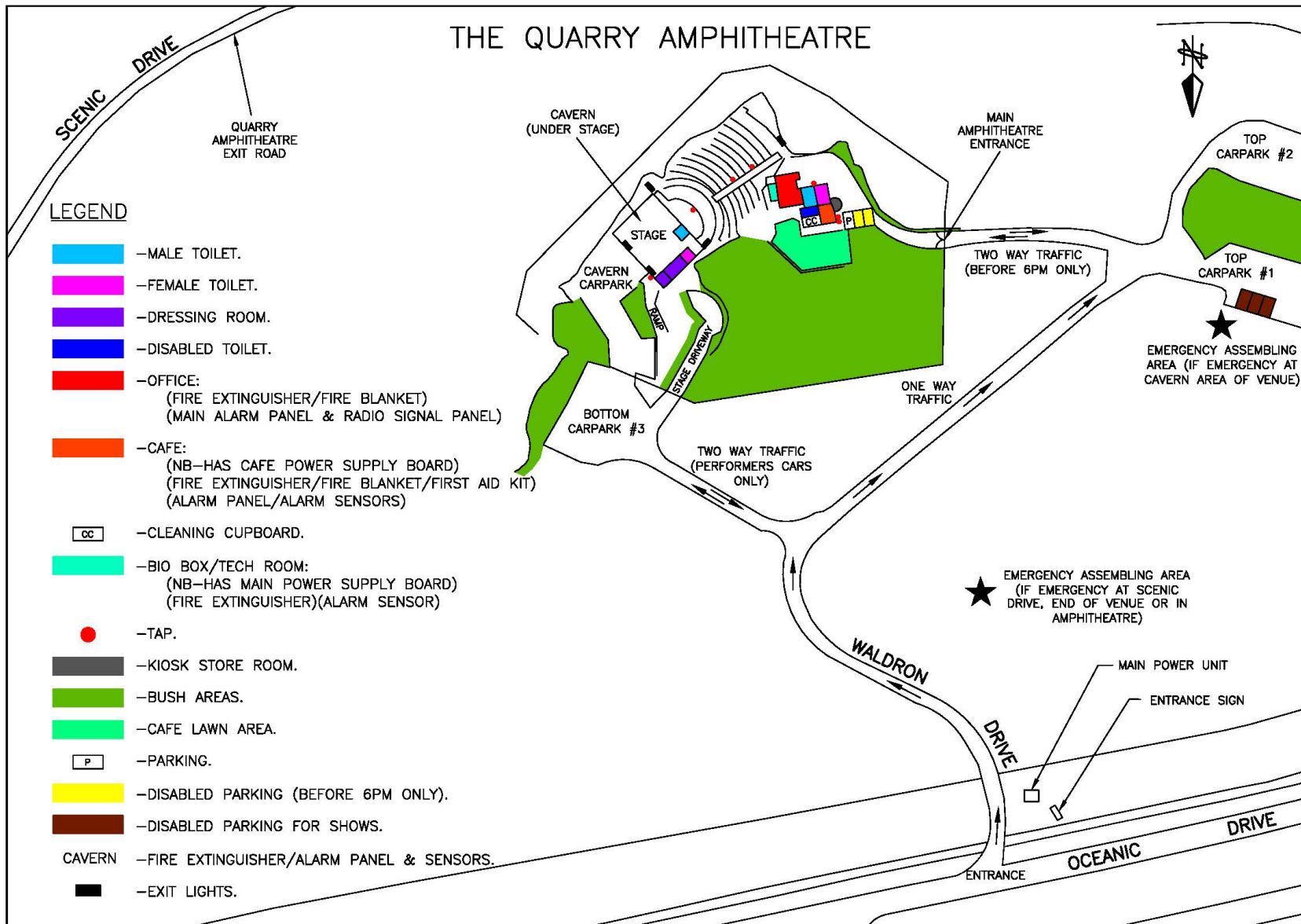
The Quarry Amphitheatre - Seating Plan 2019/20



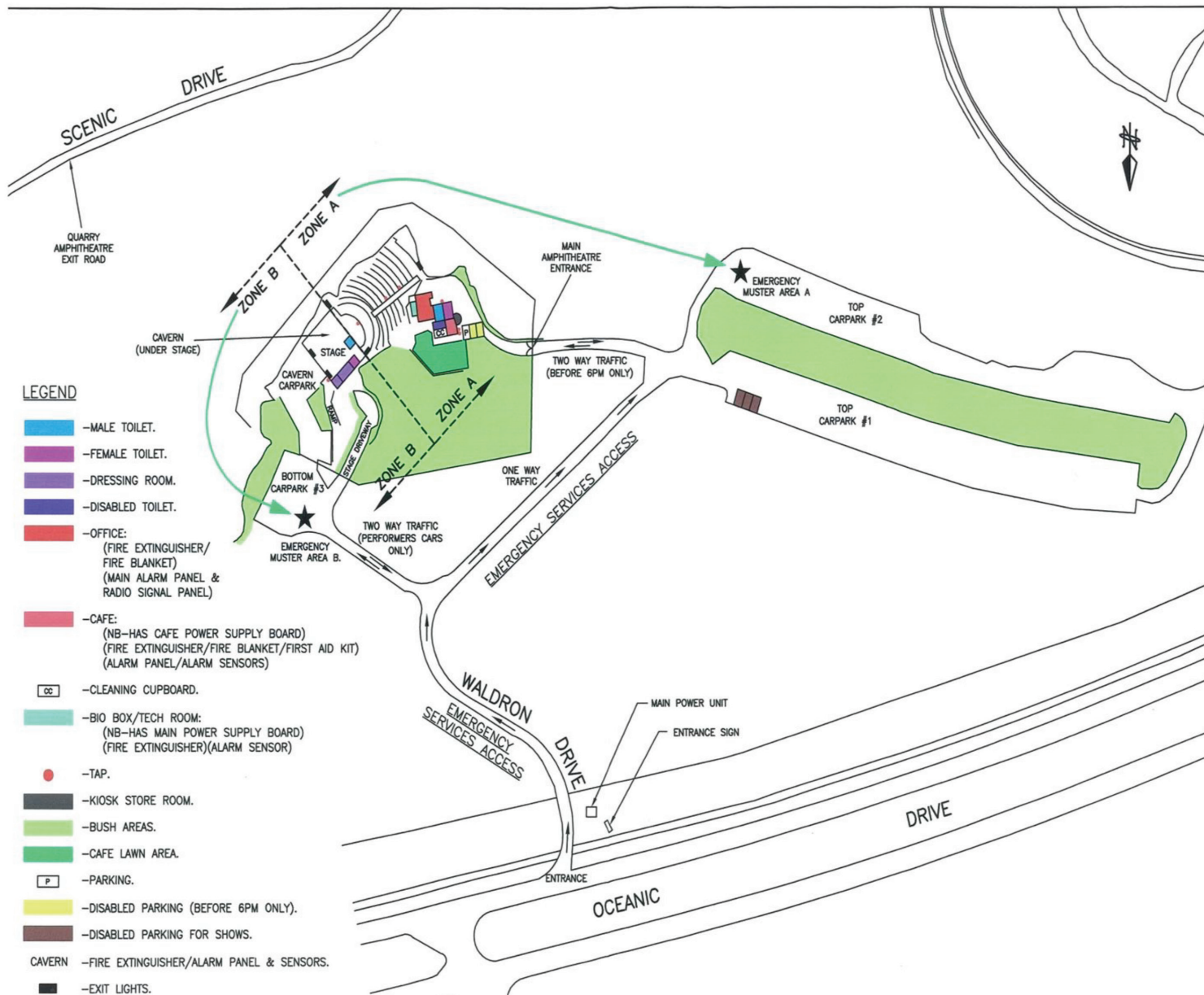
Southblock Row O = fixed stadium style seating.
 Southblock Row P = lawn seating. (This level is raised above Row O)
 Southblock Row Q = plastic chairs. (Same level as Row P)

Illustration purposes only - not to scale

Appendix 5 - SITE PLAN



Appendix 6 - EMERGENCY EVACUATION DIAGRAM



The logo consists of a stylized 'Q' formed by three concentric squares in a dark red color. This 'Q' is centered within a larger, thin, olive-green square frame that has an open top and bottom, resembling a partial border.

Quarry Amphitheatre

Quarry Amphitheatre
1 Waldron Drive
CITY BEACH WA 6015

T: +61 (08) 9383 8903

E: admin@quarryamphitheatre.com.au

www.quarryamphitheatre.com.au

The Quarry Amphitheatre is proudly owned and
managed by the Town of Cambridge

